

Research Councils UK
Excellence
with impact

Innovate UK
Driving Innovation



RCUK & Innovate UK: Urban Living Partnership

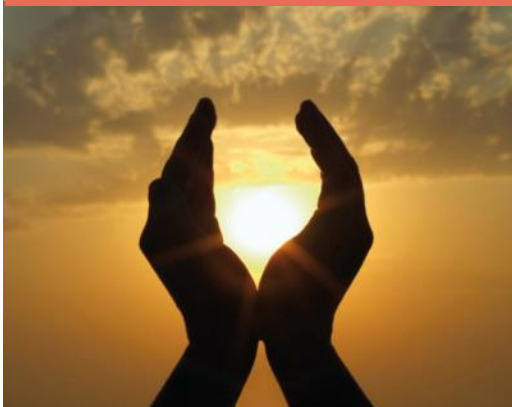
Call for City Pilots

Town Hall Meeting – 20 October 2015

*Gary Grubb (RCUK) and Mike Pitts (Innovate UK)
(Urban Living Partnership Team Co-Chairs)*

<http://urbanliving.epsrc.ac.uk/>

Innovate UK



The Partnership





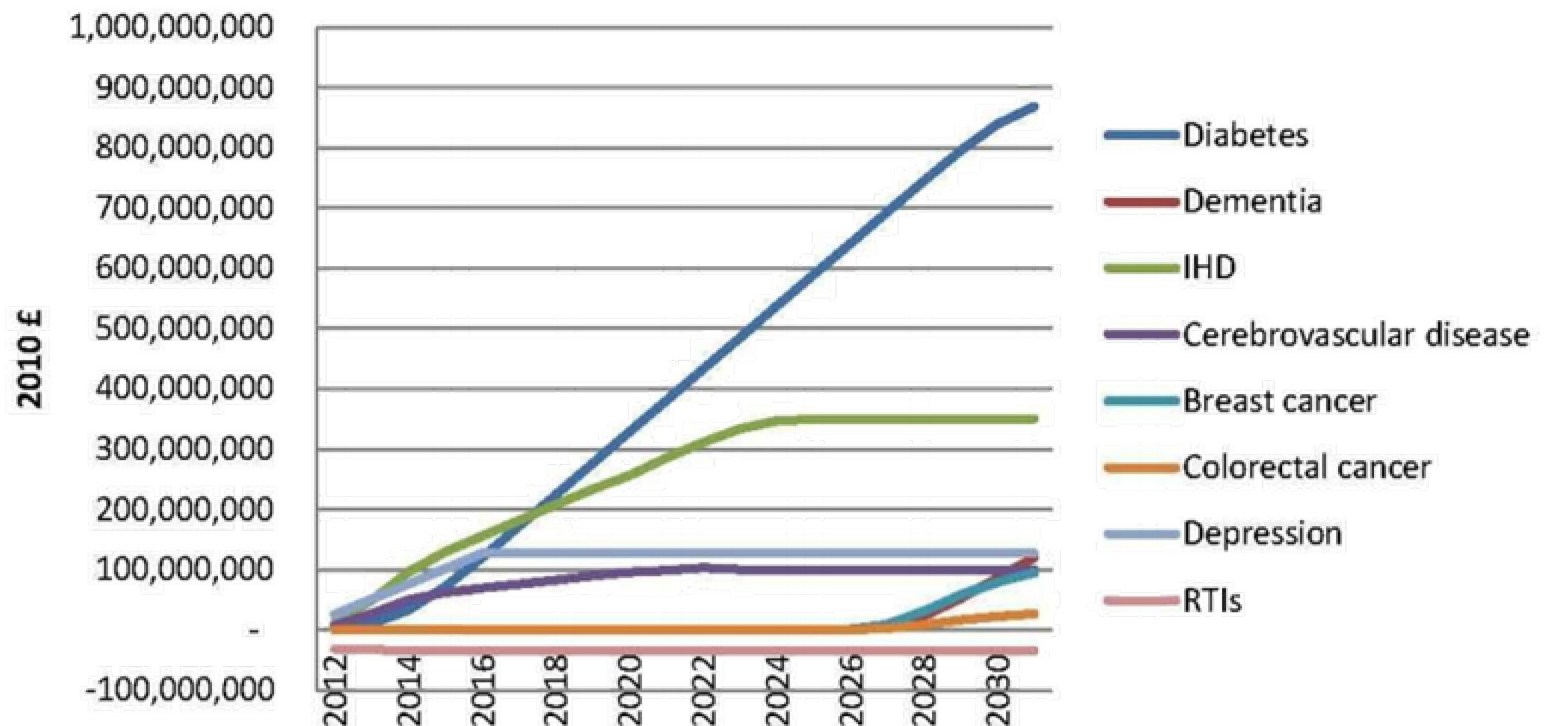
2008 > 50%

2050 > 70%

Integrated City Challenges

'Active Travel' scenario for London would save NHS £1bn by 2030
(and avoid 3500 premature deaths)

+5km walking and +10km cycling per person per week



Glasgow smart street lighting

- Reduce energy consumption
- Improve safety
- Detect anti-social behaviour
- Monitor pollution
- Increase mobility
 - community mixing
 - health benefits



**within a seven-mile radius of
Glasgow centre life-expectancy
drops by 28 years**

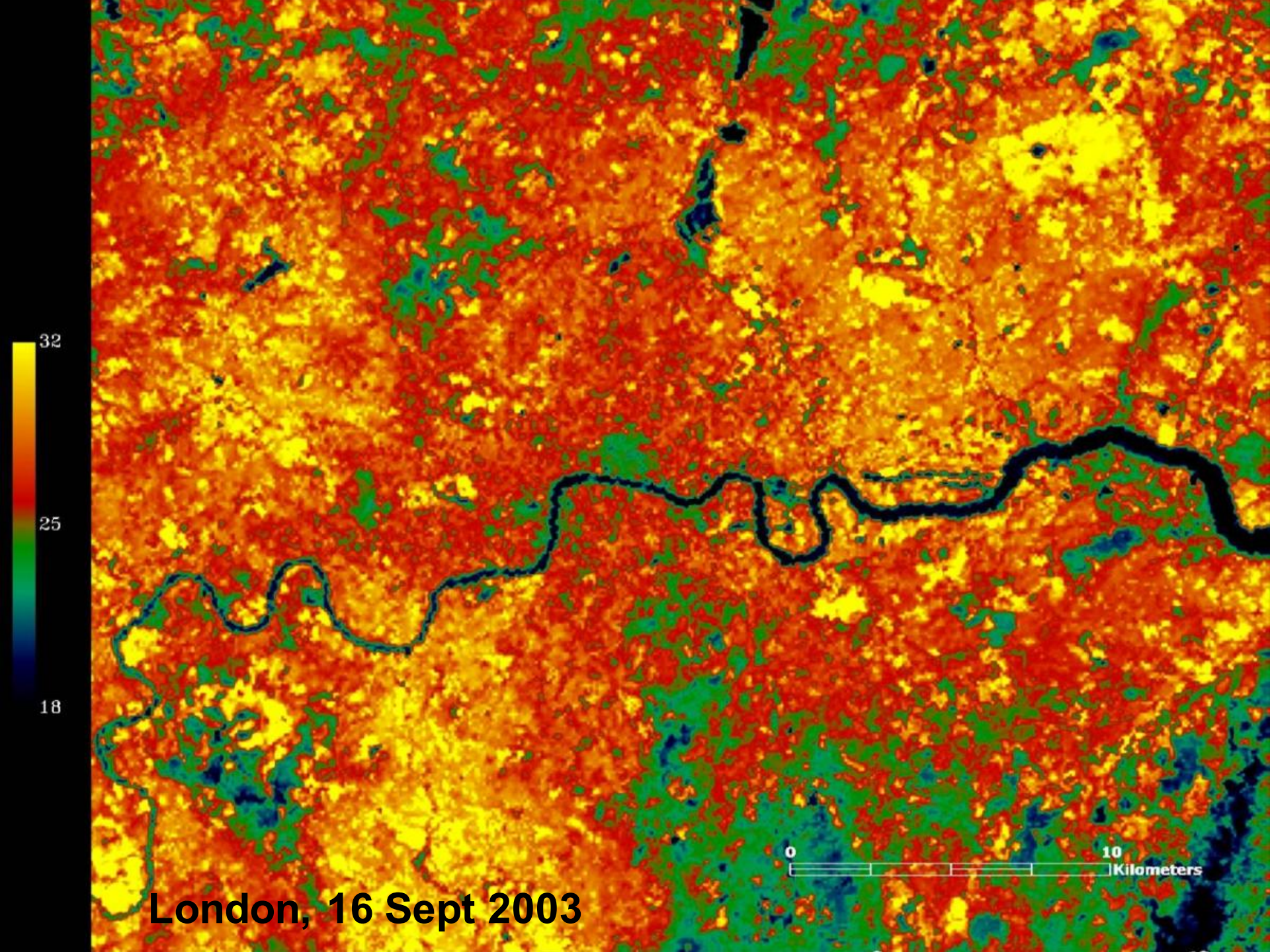
**40% of Glasgow citizens have
experienced anti-social
behaviour in the last year**



Breaking Silos







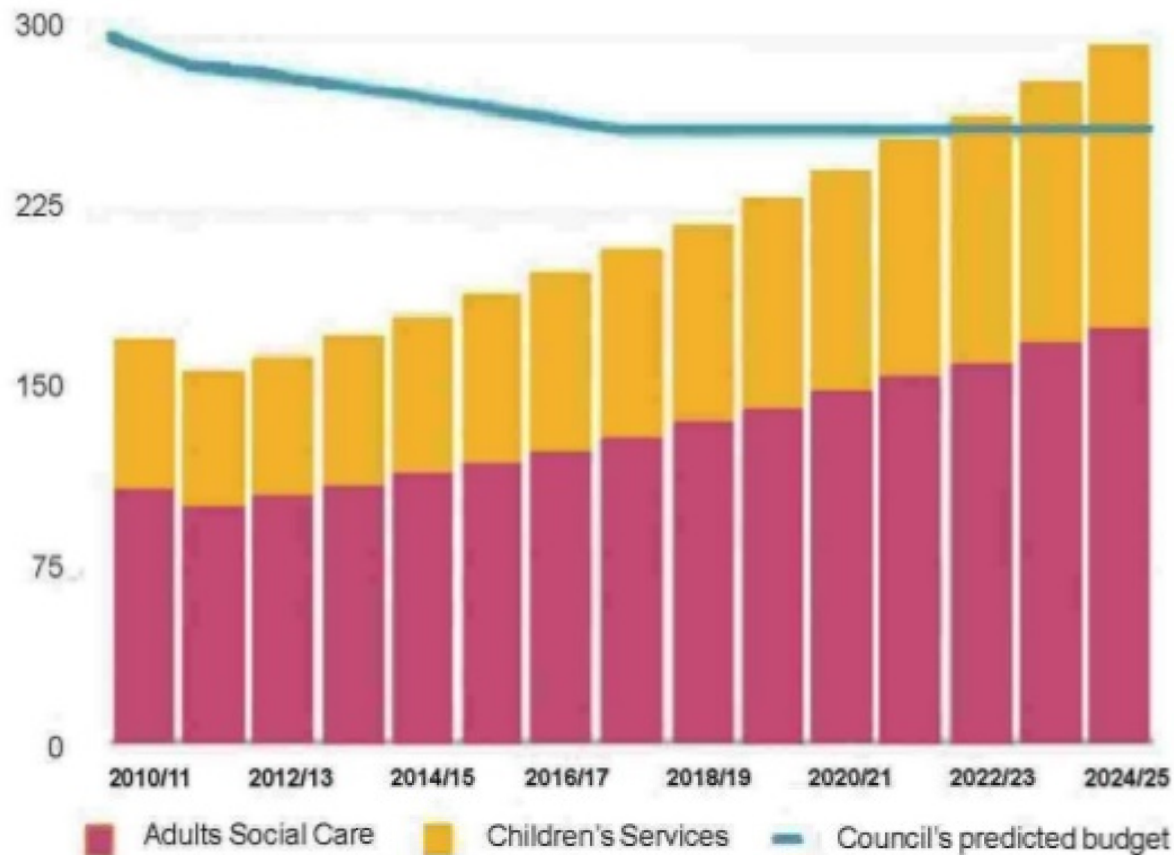
London, 16 Sept 2003



Examples of Integrated City Challenges

- 30% of **Birmingham**'s traffic is NHS related
- 2500 priority families consume 40% of **Nottingham**'s resources
- **Swindon** needs to create 34,000 jobs by 2030
- **Ipswich** spends 2/3 of its budget on social care; 85% of its care home residents have Alzheimer's
- Within a seven-mile radius of **Glasgow** centre life-expectancy drops by 28 years
- **Belfast** is 98% dependant on imported fossil fuels
- The **New York** metropolis has 12 million fewer people than **Tokyo**, yet it uses more energy in total: the equivalent of one oil supertanker every 1.5 days
- Leaky pipes result in 50% water loss in cities like **Rio de Janeiro** and **Sao Paolo**

The Barnet 'graph of doom'



Hong Kong



Mexico City

Photograph: Pablo Lopez Luz, via The Guardian



An aerial photograph of a city, likely Chicago, showing a dense skyline of skyscrapers in the background. In the foreground, there is a large, modern stadium with a distinctive circular design, surrounded by greenery and a river. The overall scene is a mix of urban development and natural elements.

Strong Economy

Quality of Life

Environment

Transport

Comms

Energy

Water and Waste

Education

Buildings

Healthcare

Security

The Goal

The RCUK / Innovate UK Urban Living Partnership will harness **UK research** and **innovation strength** to help cities realise a vision of **healthy, prosperous** and **sustainable living**.



Our Approach

We want to work with **UK cities/ urban areas** to help them **create, develop** and realise their future vision.



Building on the Past and Adding Distinctive Value

We want to:

- Build on and develop synergies with other work, past and present
- Learn from past experience and ensure that what we do will add distinctive value



How it will Work

A two stage process in each city / urban area:

1. Diagnostic and visioning phase
2. 'Delivery' phase

Open to exploring new ways of working across the partnership and with other partners

The Pilot Phase

Call launched 22 September for a pilot phase in 4-5 cities/ urban areas to undertake diagnostic phase & refine the approach / ways of working.

Applications invited from consortia, bringing together research organisations, urban government, business, civic sector & others



Pilot Cities

The pilot call is open to a **wide range of UK cities** & **‘urban areas’** of differing sizes, complexity, age & geography. The diagnostic work should aim to enhance **understanding of inter-dependent challenges and opportunities**, **add value** to existing urban strategies/visions and co-produce outcomes of **value to cities** in making future investments and lay the foundations for **co-designing integrated responses** to complex challenges



Sharing Learning from the Pilots and City Case Studies

Our aim is that pilot / city case studies will stimulate insights and innovation of **value to other cities and contexts**, nationally and internationally. Longer term our aspiration is also to learn & extend the approach to other urban areas.



Outline Timetable for Taking Forward the Pilot Phase

23 September 2015	Call for pilot city consortia launched
20 October	Town Meeting in Birmingham
26 November 2015	Registration of intention to submit / Expressions of Interest (Smart Survey)
21 January 2016 1600hrs	Closing date for submission of full proposals (via JeS)
February 2016	Shortlisting for Interview / final decision / outcome notification
w/c 7 March 2016 tbc	Interviews with shortlisted consortia
April 2016	Public Announcement of Pilot City Consortia
May 2016	Pilot city consortia start diagnostic phase
2017	Pilot city consortia report on initial diagnostic phase; pilot cities contribute to 'lessons sharing' events

What Might Pilot City Consortia Look Like?

Wider City Networks and Research and Innovation Ecosystem

Sharing learning and comparative context and experience; exploring transferability and experimenting; provision of wider data, tools, infrastructure, approaches ...

Links between pilot / case study Cities and wider UK urban networks

Collaboration with wider research and innovation resources e.g. UKCRIC, Future Cities Catapult, Foresight Cities

Wider International city partnerships and networks

Core City Consortium

Developing city future visions; setting innovation agendas around key complex city challenges; understanding inter-dependencies; innovating, co-designing responses and experimenting; making a difference in cities;..

Wider City Innovation Ecosystem, Collaborations, Infrastructure Fora and Networks

Consulted and engaged, contributing to diagnostic phase, innovation projects, etc

Potential opportunities to catalyse collaborative innovation projects, drawing on wider research and innovation expertise as well as city partners

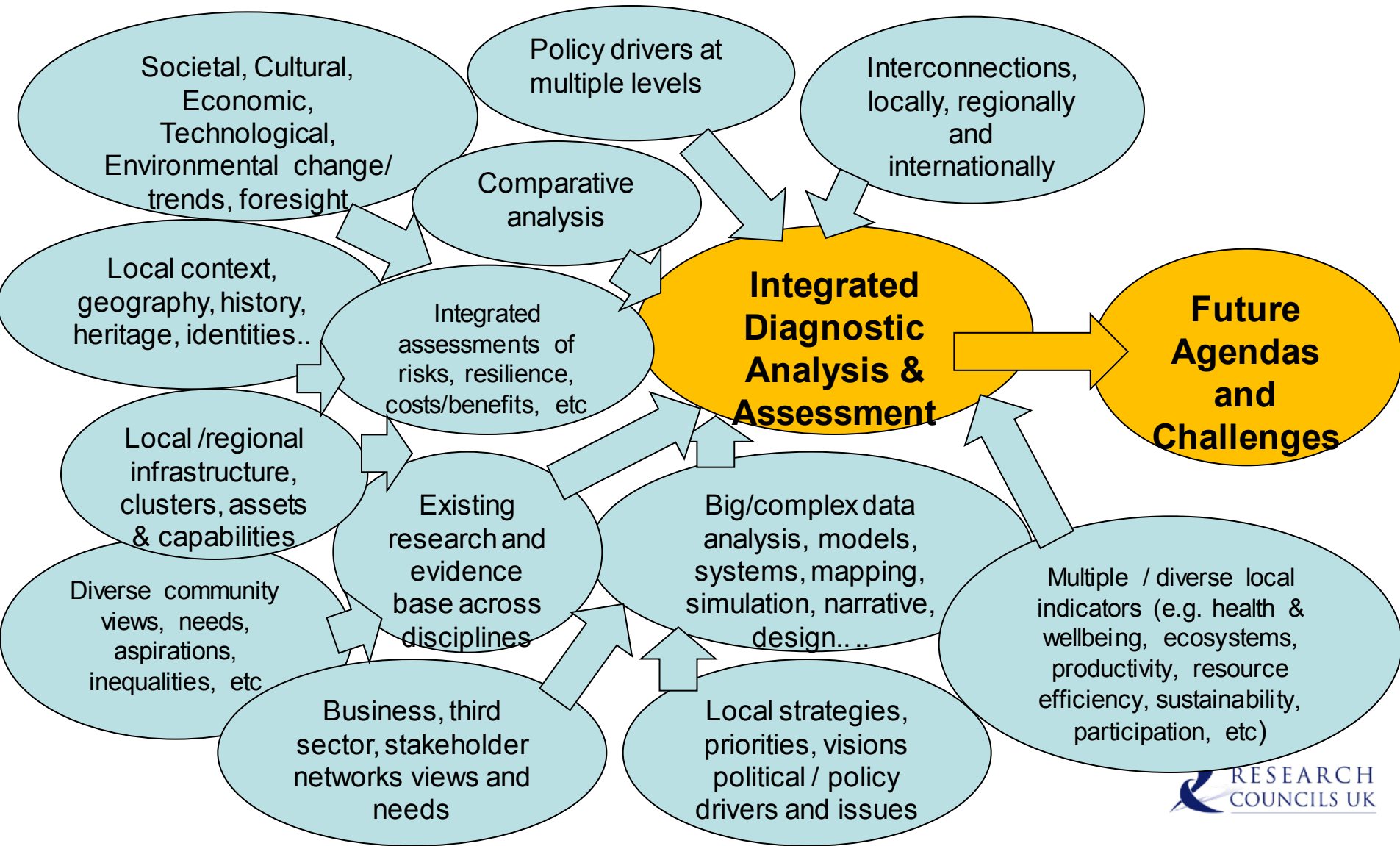
Core Team

Leadership: Integration: Data & Analysis; Inclusive Engagement; Networking; Catalysing Innovation; Communication; Evaluation...

Lead Research Organisation
(Grant holder), cross-disciplinary teams, partner research organisations (if applicable)

City Partners
(City Government, LEPS, public bodies, key business and innovation partners, Civic sector, etc)

Diagnostic Phase: A complex challenge of integration



Phasing of Activities: 18 month Pilot Phase

Start May
2016

Oct 2016

May 2017

Summer/ Autumn
2017

Core
team/
consortia
Estab-
lished

Developing wider city partnerships

Exploring wider collaborations – other
cities, internationally etc

Baseline integrated assessment and
diagnostics

6 month interim report
after bringing together
existing evidence
base including gaps /
future diagnostics
needs

Pilot Cities Forum

First annual report -
initial outcomes of
diagnostics work

Pilot Cities Forum

Proposals for delivery phase
initial priorities

Recommendations for further
developing the
diagnostic phase

Publication of Initial
City Integrated
assessment &
recommendations

Launch of phase 2 in
cities

Phasing of Activities: Potential Future Phases in Case Study Cities

Autumn 2017

Sustaining & developing city partnerships

Developing wider collaborations, joint projects – other cities, internationally, other funding sources, etc

Longitudinal integrated assessment, further diagnostics (e.g. 'deep dives') and evaluation

Initial Integrated assessment and recommendations

Catalysing & commissioning 'delivery' / innovation projects to address 'challenge' 1

Projects to address 'challenge' 2

Projects to address 'challenge' 3 etc.

Further / updated Integrated assessments and recommendations

Projects to address further 'challenge' 4

Projects to address 'challenge' 5